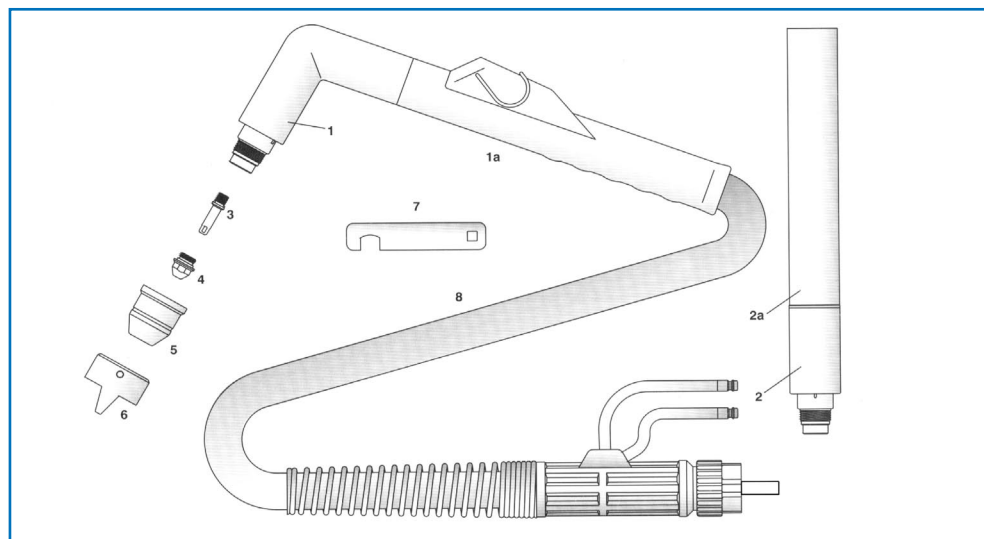


EWS® EX100RF

ITEM	CODE	DESCRIPTION
	W0400038	Hand torch complete with 6m cable (central conn)
		Hand torch complete with 12m cable (central conn)
	W0400040	Machine torch complete with 6m cable (central conn)
		Machine torch complete with 12m cable (central conn)
1	W0300171	Hand torch head with 52751, 51272/CU & 60354
1a	W0300172	Handgrip complete with microswitch
2	W0300169	Machine torch head with 52751, 51272/CU & 80054
2a	W0300168	Machine handle
3	W0300160	Electrode with O Ring, long life - HF (pat. pend.)
4		Tip Ø 0.8 - 30A
	W0300164	Tip Ø 1.0 - 50A
	W0300165	Tip Ø 1.3 - 80A
	W0300161	Tip Ø 1.6 - 120A
		Tip Ø 1.8 - 150A
5	W0300167	Shield cup
	W0300265	Teflon shield cup
6	W0300246	Double pointed spacer
7	W0300250	Wrench for tip and electrode
8		6m central conn. complete cable - hand torch
	W0300247	12m central conn. complete cable - hand torch
		6m central conn. complete cable - machine torch
	W0300249	12m central conn. complete cable - machine torch



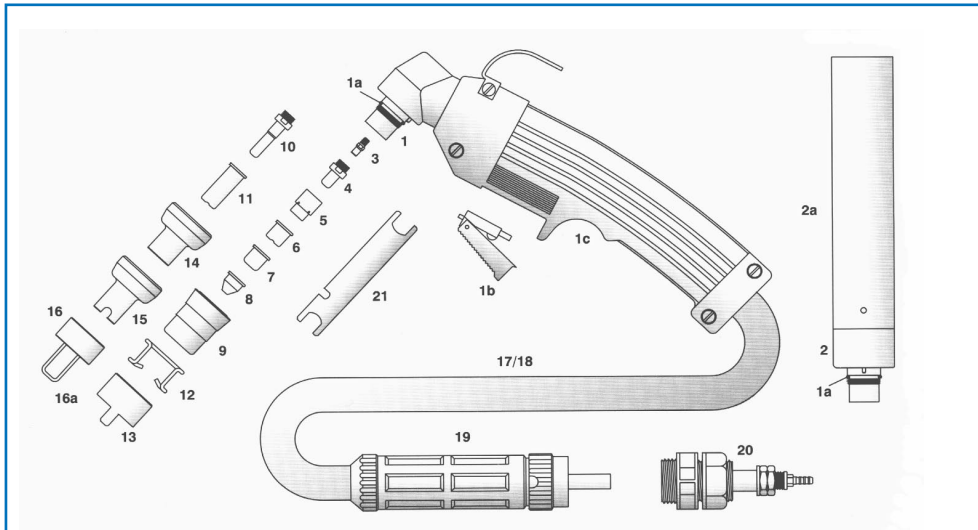
A.B.Esse

EWS® EX40-2V, EX60

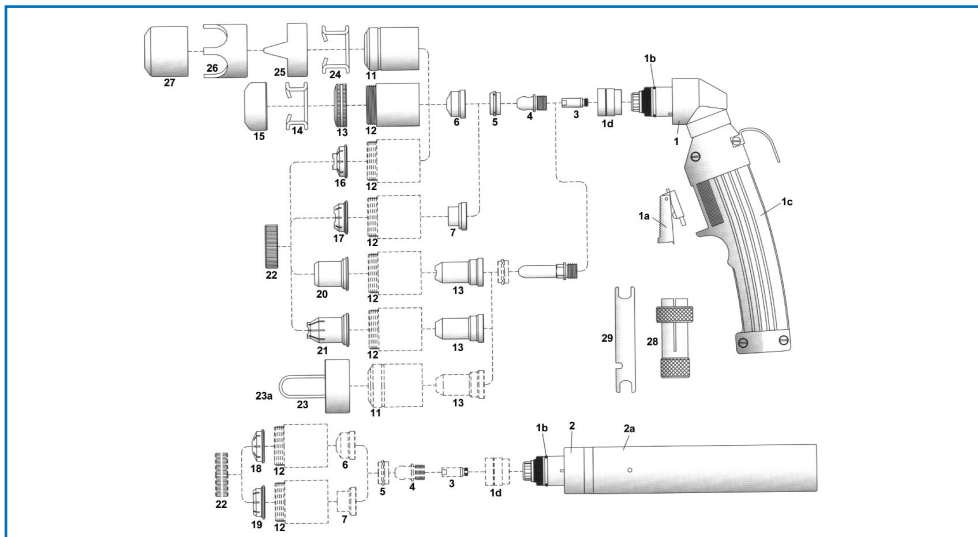
ITEM	CODE	DESCRIPTION
		Hand torch complete with 6m cable (central conn)
		Hand torch complete with 12m cable (central conn)
	W0400046	Machine torch complete with 6m cable (central conn)
		Machine torch complete with 12m cable (central conn)
1		Hand torch head
1a	W0300101	O Ring
1b		Switch
1c		Handgrip complete with switch
2	W0300148	Machine torch head
2a	W0300144	Machine handle
3	W0300104	Diffusor
4	W0300105	Electrode, long life - HF (pat. pend.)
5	W0300106	Swirl ring - VESPEL®
6		Tip Ø 0.9 - 35A
	W0300107	Long life tip Ø 1.0 - 50A
		Long life tip Ø 1.1 - 60A
	W0300108	Long life tip Ø 1.2 - 70A
		Tip Ø 1.2 - 70A
7	W0300149	Flat tip Ø 0.9
	W0300150	Flat tip Ø 1.2
8	W0300151	Pipe saddle tip Ø 1.0
	W0300152	Pipe saddle tip Ø 1.2
9	W0300109	Nozzle retaining cap
10	W0300110	Extended electrode, long life - HF (pat. pend.)
11		Extended tip Ø 0.9 - 35A
	W0300111	Extended long life tip Ø 1.0 - 50A
		Extended long life tip Ø 1.1 - 60A
	W0300112	Extended long life tip Ø 1.2 - 70A
12		Spacer spring
13	W0300114	Double pointed spacer
14		Shield cup, hand (for extended tips 51102.09 & 51095/L)
15	W0300239	Shield cup, hand (for extended tips 51102/S & 51096/L)
16		Spacer complete with springs
16a		Spare springs
17		6m air and power cable (1/8") - hand torch
		12m air and power cable (1/8") - hand torch
18		6m air and power cable (1/8") - machine torch
		12m air and power cable (1/8") - machine torch
19		Central connector torch side
20		Central connector machine side
21	W0300119	Wrench for electrode

A.B.Esse

EWS® EX40-2V, EX60



EWS® EX100, EX100M, EX100M-3V



EWS® EX100, EX100M, EX100M-3V

ITEM	CODE	DESCRIPTION
		Hand torch complete with 6m cable (central conn)
		Hand torch complete with 12m cable (central conn)
	W0400034	Machine torch complete with 6m cable (central conn)
		Machine torch complete with 12m cable (central conn)
1	W0300263	Hand torch head
1a		Switch
1b	W0300121	O Ring
1c		Handgrip complete with switch
1d		Front insulator - VESPEL®
2	W0300143	Machine torch head
2a	W0300144	Machine handle
3	W0300122	Diffusor
4	W0300123	Electrode, long life - HF (pat. pend.)
5	W0300124	Swirl ring - VESPEL®
6	W0300125	Tip Ø 1.1
		Tip Ø 1.35
		Tip Ø 1.6
	W0300128	Gouging tip Ø 2.4
	W0300126	Long life tip Ø 1.35
	W0300175	Long life tip Ø 1.6
		Contact tip Ø 1.35
7	W0300149	Contact tip Ø 1.6
8		Extended diffusor
8a	W0300133	Extended electrode, long life - HF (pat. pend.)
9		Extended tip for contact cutting max. 50A
10	W0300178	Extended tip Ø 1.35 - 90A (for 51958 & 51959 or 60380)
	W0300179	Extended tip Ø 1.6 - 120A (for 51958 & 51959 or 60380)
11		Nozzle retaining cap
12	W0300138	Long life contact nozzle retaining cap
		Long life contact nozzle retaining cap - VESPEL®
13	W0300244	Spring holder protection nut
14	W0300245	Spacer spring for code 51952
15		Gouging spacer
16	W0300180	Spacer for contact cutting, hand
18	W0300181	Shield cup, machine
20		Shield cup, hand (max. 50A)
21	W0300183	Spacer for contact cutting, hand
22	W0300184	Locking nut
23		Spacer complete with springs
23a		Spare springs

PLASMA CIRCLE CUTTING ATTACHMENTS

EWS® EX100, EX100M, EX100M-3V

ITEM	CODE	DESCRIPTION
24		Spacer spring
25		Double pointed spacer
26		Crown spacer
27	W0300132	Gouging spacer
		6m air and power cable - hand torch
		12m air and power cable - hand torch
		6m air and power cable - machine torch
		12m air and power cable - machine torch
		Central connector - torch side
		Central connector - machine side
28	W0300142	Extractor for swirl ring
29	W0300119	Wrench for electrode

EWS® EX40-2V/EX60/EX RF; CEBORA® PROF 35/50/70/CP90

ITEM	CODE	DESCRIPTION
	166	Circle cutting attachment P50
	154	Cutting guide P50
		Circle cutting attachment P70-EX60
		Cutting guide P70-EX60
	163	Circle cutting attachment CP-90
	153	Cutting guide CP-90
		Circle cutting attachment EX100RF
		Cutting guide EX100RF
1		Radius bar 250mm
2		Radius bar 400mm
3		Magnetic base assembly
4		Free centering straight pin
5		Straight locking pin

EWS® EX100/EX100M/EX100M-3V; CEBORA® PROF 90/120/150; TRAFIMET® A90/140

ITEM	CODE	DESCRIPTION
	169	Circle cutting attachment P50
	155	Cutting guide
1		Radius bar 250mm
2		Radius bar 400mm
3		Magnetic base assembly
4		Free centering straight pin
5		Straight locking pin