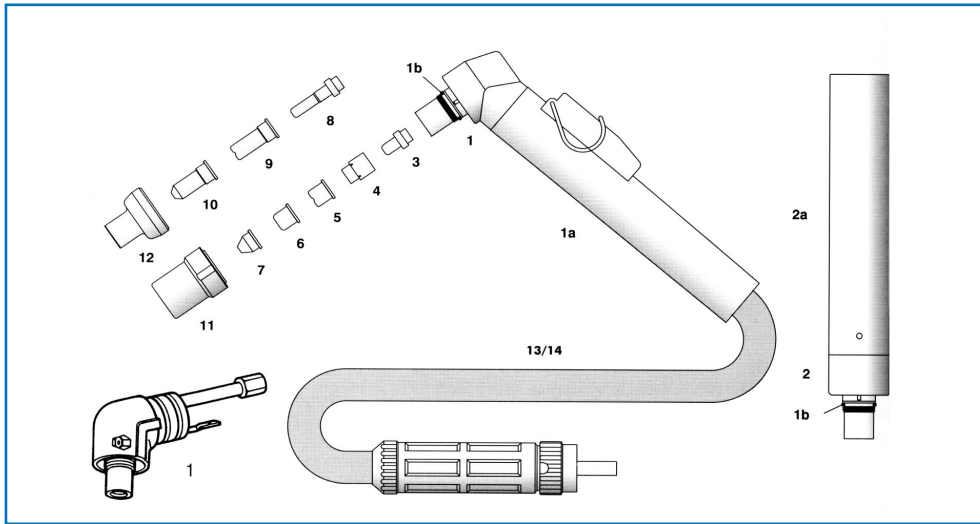
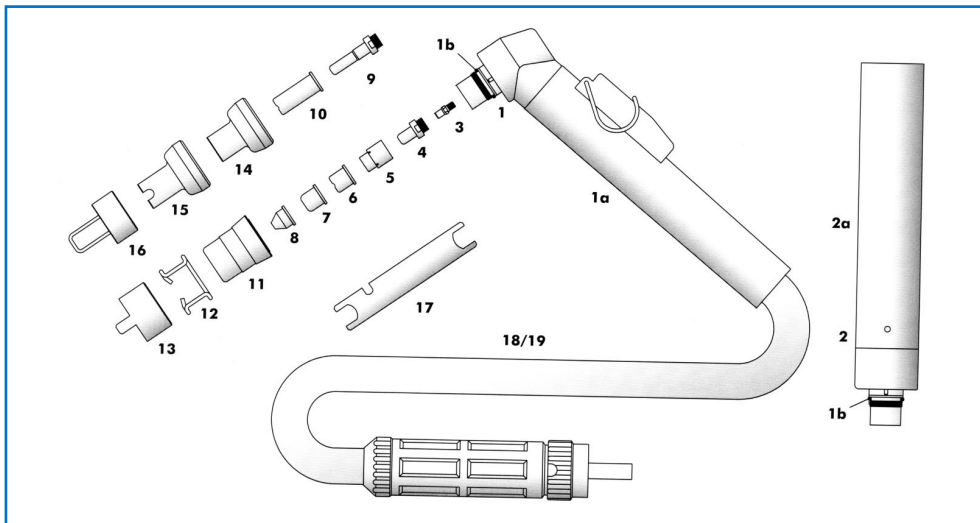


CEBORA® P50® / P35HF-ART.896, P50-ART.937



CEBORA® P70® / 35PC/HF-ART.292, P36-ART.938, P52-ART.940, P70-ART.941



CEBORA® P70® / 35PC/HF-ART.292, P36-ART.938, P52-ART.940, P70-ART.941

ITEM	CODE	DESCRIPTION
	1564	Hand torch complete with 6m cable (1/8" conn)
	1573	Hand torch complete with 6m cable (central conn)
	1573.20	Hand torch complete with 12m cable (central conn)
	1563	Machine torch complete with 6m cable (1/8" conn)
	1566	Machine torch complete with 6m cable (central conn)
	1566.20	Machine torch complete with 12m cable (central conn)
1	1351	Hand torch head
1a	1356	Handgrip with microswitch
1b	3.160067	O Ring
2	1349	Machine torch head
2a	3.055.623	Machine handle
3	3.065204	Diffusor
4	1402	Electrode, long life - HF (pat. pend.)
5		Swirl ring - VESPEL®
6	1309	Tip Ø 0.9 - 35A
	1396	Long life tip Ø 1.0 - 50A
		Long life tip Ø 1.1 - 60A
	1308	Tip long life Ø 1.2 - 70A
		Flat tip Ø 1.0
		Flat tip Ø 1.2
8	1305	Conical tip Ø 1.0 (Lo-Amp)
		Conical tip Ø 1.2
9	1368 (1403)	Extended electrode, long life - HF (pat. pend.)
10	1366	Extended tip Ø 0.9 - 35A
	1395	Extended tip, long life Ø 1.0 - 50A
		Extended tip, long life Ø 1.1 - 60A
		Extended tip, long life Ø 1.2 - 70A
11	5.710.171	Nozzle retaining cap
12	1394	Spacer spring
13	1405	Double pointed spacer
14		Shield cup, hand (for extended tips 51102.09 & 51095/L)
15		Spacer for contact cutting, hand (for extended tips 51102/S & 51096/L)
16		Spacer complete with springs
16a		Spare springs
17	3.045.012	Wrench for electrode
18	1344	6m air and power cable (1/8") - hand torch
		12m air and power cable (1/8") - hand torch
19		6m air and power cable (1/8") - machine torch
		12m air and power cable (1/8") - machine torch

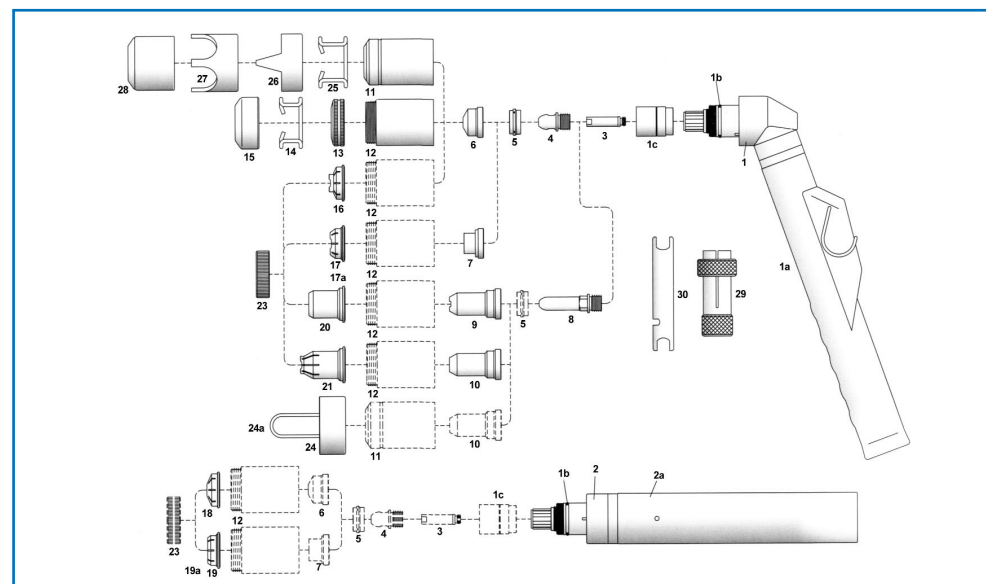
CEBORA® P150® CP160® / P90-ART.942, P92-ART.943, P120-ART.945, P122-ART.946, P150-ART.950, P152-ART.951, P162-ART.952

ITEM	CODE	DESCRIPTION
	1571	Hand torch complete with 6m cable (1/8" conn)
	1576	Hand torch complete with 6m cable (central conn)
	1578	Hand torch complete with 12m cable (central conn)
	1529	Machine torch complete with 6m cable (1/8" conn)
	1577	Machine torch complete with 6m cable (central conn)
	1579	Machine torch complete with 12m cable (central conn)
1	1353	Hand torch head
1a		Handgrip with microswitch
1b	1398	O Ring
1c		Front insulator - VESPEL®
2	1354	Machine torch head
2a	3.055.623	Machine handle
3	1378	Diffusor
4	1376	Electrode, long life - HF (pat. pend.)
5	1377	Swirl ring - VESPEL®
6	1371	Tip Ø 1.1
	1372	Tip Ø 1.35
	1373	Tip Ø 1.6
	1374	Tip Ø 1.8
	1375	Gouging tip Ø 3.0
		Long life tip Ø 1.35
		Long life tip Ø 1.6
		Long life tip Ø 1.8
7		Contact tip Ø 1.35
		Contact tip Ø 1.6
	1305	Contact tip Ø 1.8
		Extended diffusor
8	1517	Extended electrode, long life - HF (pat. pend.)
9	1369	Contact extended tip max 50A
10		Extended tip Ø 1.35 - 90A
		Extended tip Ø 1.6 - 120A
		Extended tip Ø 1.8 - 150A
11	1389	Nozzle retaining cap
12		Contact nozzle retaining cap, long life
		Contact nozzle retaining cap, long life - VESPEL®
13		Spring holder protection nut
14		Spacer spring for code 51952
15		Gouging spacer
16		Spacer for contact cutting, hand
17		Spacer for contact cutting, hand

A.B.Esse

CEBORA® P150® CP160® / (continued)

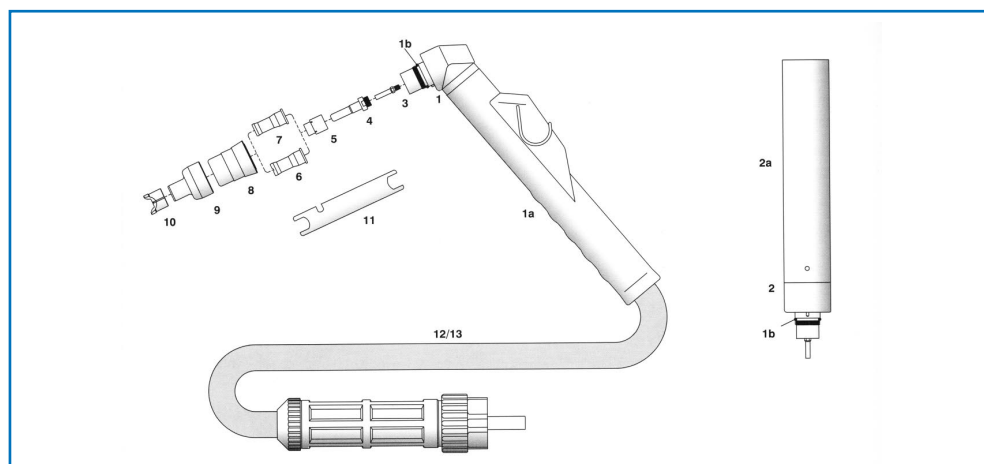
ITEM	CODE	DESCRIPTION
17a		Spacer for contact cutting, hand
18		Shield cup, machine
19		Shield cup, machine
19a		Shield cup, machine
20		Shield cup, hand (max. 50A)
21		Spacer for contact cutting, hand
23		Locking nut
24		Spacer complete with springs
24a		Spacer springs
25	1386	Spacer springs
26	1408	Double pointed spacer
27		Crown spacer
28	1406	Gouging spacer
29	1509	Extractor for swirl ring
30	3.045.010	Wrench for electrode
		6m air and power cable (1/8") - hand torch
		12m air and power cable (1/8") - hand torch
		6m air and power cable (1/8") - machine torch
		12m air and power cable (1/8") - machine torch



A.B.Esse

CEBORA® CP90® / PC5060/T-ART.354, PC9060/T-ART.356

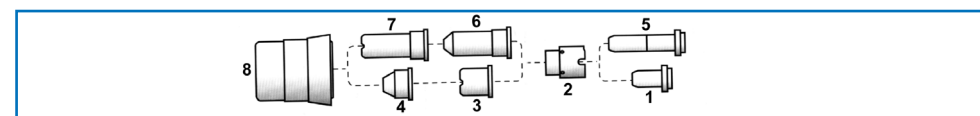
ITEM	CODE	DESCRIPTION
	1216	Hand torch complete with 6m cable (central conn)
	1216.20	Hand torch complete with 12m cable (central conn)
	1218	Machine torch complete with 6m cable (central conn)
	1218.20	Machine torch complete with 12m cable (central conn)
1	1358	Hand torch head
1a		Handgrip with microswitch
1b	3.160.067	O Ring
2	1348	Machine torch head
2a	3.055.623	Machine handle
3		Diffusor
4	1368	Electrode, long life - HF (pat. pend.)
5		Swirl ring - VESPEL®
6		Long life tip Ø 1.0 - 20-50A (for use with item 8 only)
7		Long life tip Ø 1.2 - 50-70A (for use with item 8 only)
		Long life tip Ø 1.3 - 70-90A (for use with item 8 only)
8		Nozzle retaining cap (for use with item 6-7 only)
9		Shield cup, hand
10		Spacer for contact cutting, hand
11	3.045.012	Wrench for electrode
12		6m air and power cable (1/8") - hand torch
		12m air and power cable (1/8") - hand torch
13		6m air and power cable (1/8") - machine torch
		12m air and power cable (1/8") - machine torch



A.B.Esse

CEBORA® P 30® / ART.920-925-936

ITEM	CODE	DESCRIPTION
1	1520-ZR	Electrode - ZR
	1520-HF	Electrode - HF
2	1510	Swirl ring - VESPEL®
3	1304	Tip
4	1305	Conical tip (Lo-Amp.)
5	1519-ZR	Long electrode - ZR
	1519-HF	Long electrode - HF
6	1306	Long conical tip (Lo-Amp.)
7	1370	Long tip
8	5.710.120	Nozzle retaining cap



A.B.Esse

CEBORA® P50® / P35HF-ART.896, P50-ART.937

ITEM	CODE	DESCRIPTION
	1526	Hand torch complete with 6m cable (1/8" conn)
	1574	Hand torch complete with 6m cable (central conn)
		Hand torch complete with 12m cable (1/8" conn)
		Hand torch complete with 12m cable (central conn)
		Machine torch complete with 6m cable (1/8" conn)
		Machine torch complete with 6m cable (central conn)
		Machine torch complete with 12m cable (1/8" conn)
		Machine torch complete with 12m cable (central conn)
1	1352	Hand torch head
1a	1356	Handgrip with microswitch
1b		O Ring
2		Machine torch head
2a		Machine handle
3	1521-ZR	Electrode - ZR
	1521-HF	Electrode, long life - HF (pat. pend.)
4		Swirl ring - VESPEL®
5	1304	Tip Ø 1.0
	1396	Long life tip Ø 1.0
		Long life tip Ø 1.1
6		Flat tip Ø 1.0
7	1305	Conical tip Ø 1.0 (Lo-Amp)
8	1518-ZR	Extended electrode - ZR
	1518-HF	Extended electrode - HF
		Extra long electrode - HF (42.4mm)
9	1370	Extended tip Ø 1.0
	1395	Extended tip, long life Ø 1.0
		Extended tip, long life Ø 1.1
		Extra long tip Ø 1.1 (37.1mm)
10	1306	Extended conical tip Ø 1.0 (Lo-Amp)
11	5.710.121	Nozzle retaining cap
12		Shield cup, hand (for extended tips 51095/L, 51102/S, 51101)
13	1344	6m air and power cable (1/8") - hand torch
		12m air and power cable (1/8") - hand torch
14		6m air and power cable (1/8") - machine torch
		12m air and power cable (1/8") - machine torch

CEBORA® PROF 35/50/70/CP90; EWS® EX40-2V/EX60/EX RF

ITEM	CODE	DESCRIPTION
	166	Circle cutting attachment P50
	154	Cutting guide P50
		Circle cutting attachment P70-EX60
		Cutting guide P70-EX60
	163	Circle cutting attachment CP-90
	153	Cutting guide CP-90
		Circle cutting attachment EX100RF
		Cutting guide EX100RF
1		Radius bar 250mm
2		Radius bar 400mm
3		Magnetic base assembly
4		Free centering straight pin
5		Straight locking pin

CEBORA® PROF 90/120/150; EWS® EX100/EX100M/EX100M-3V; TRAFIMET® A90/140

ITEM	CODE	DESCRIPTION
	169	Circle cutting attachment P50
	155	Cutting guide
1		Radius bar 250mm
2		Radius bar 400mm
3		Magnetic base assembly
4		Free centering straight pin
5		Straight locking pin